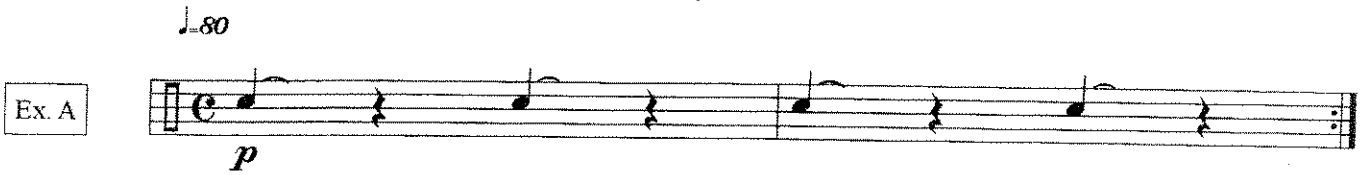


# SEMSBA Accessories Evaluation

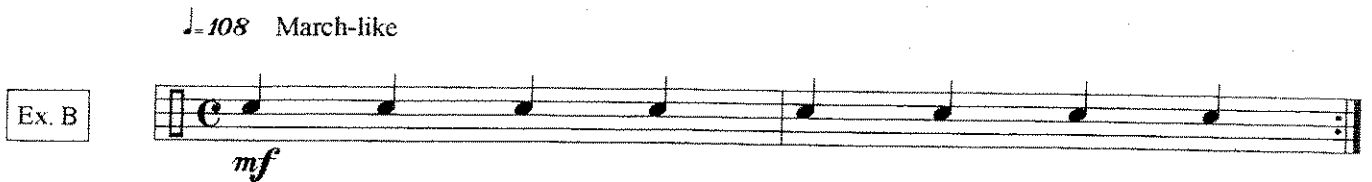
DIRECTIONS: Examine the rhythm and tempo of the requested line, consider the proper playing technique, then play.

## Crash Cymbals

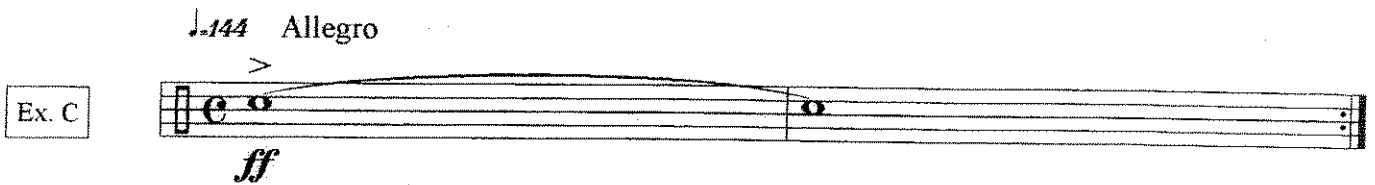
Ex. A  $\text{♩} = 80$   
*p*



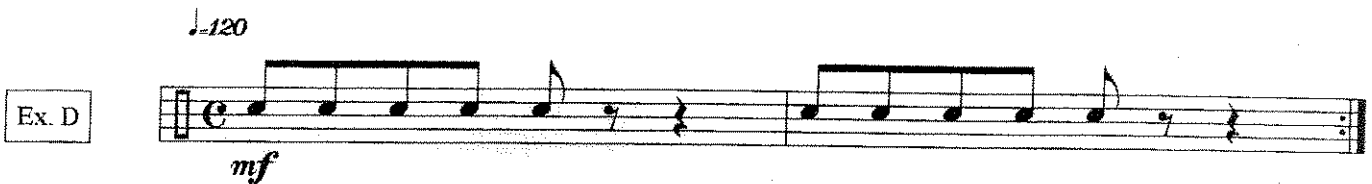
Ex. B  $\text{♩} = 108$  March-like  
*mf*



Ex. C  $\text{♩} = 144$  Allegro  
*ff*

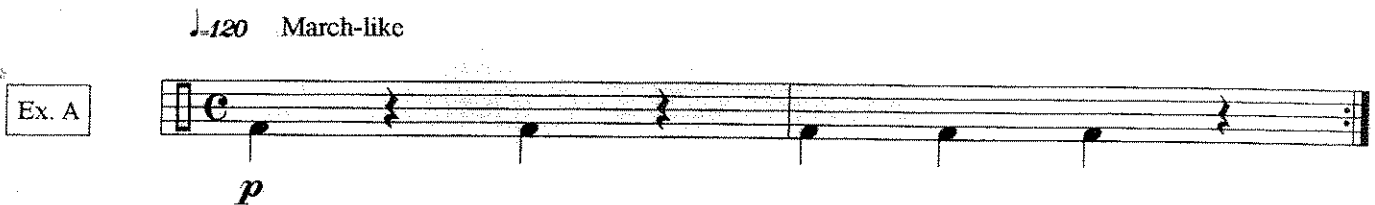


Ex. D  $\text{♩} = 120$   
*mf*

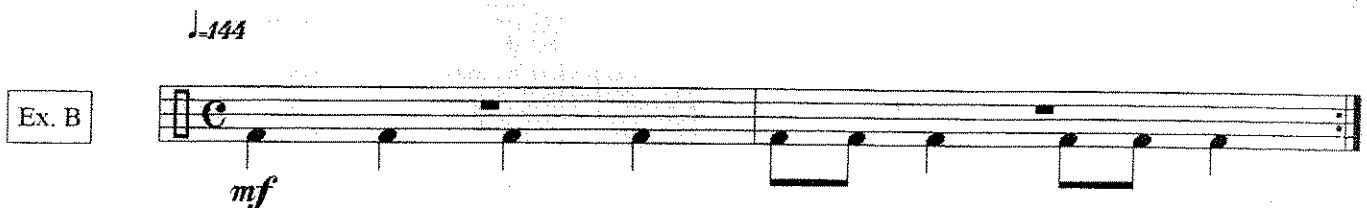


## Bass Drum

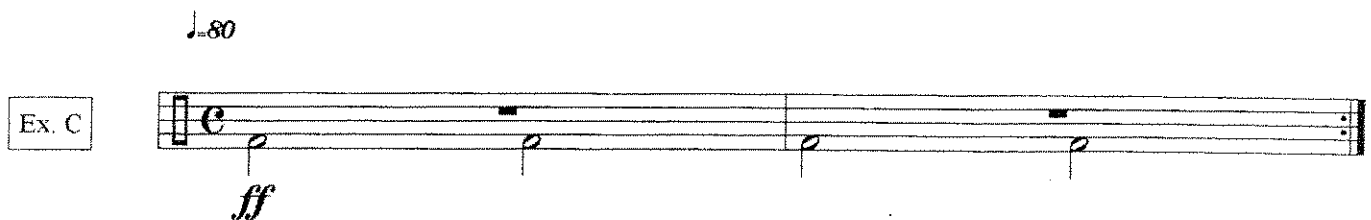
Ex. A  $\text{♩} = 120$  March-like  
*p*



Ex. B  $\text{♩} = 144$   
*mf*



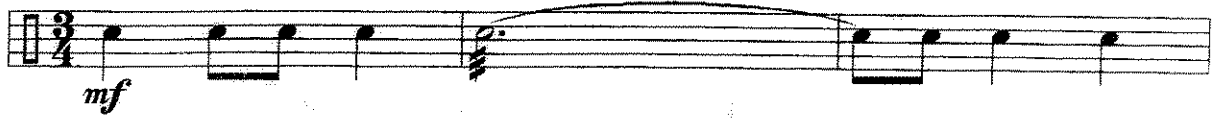
Ex. C  $\text{♩} = 80$   
*ff*



# TRIANGLE AND TAMBOURINE

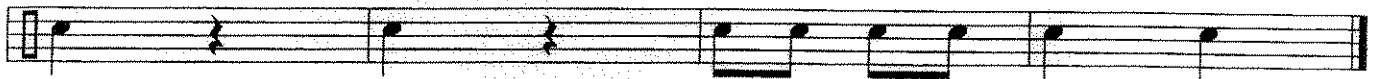
♩-120

Ex. A



♩-144

Ex. B



♩-108

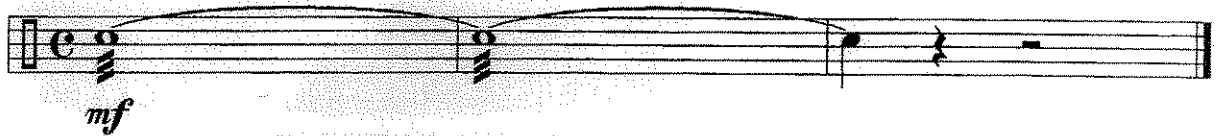
Ex. C



# SUSPENDED CYMBAL

♩-108

Ex. A



♩-80

Ex. B

